



**GRC PARTNERS**

Regulatory Advisory



**YOUR TRUSTED PARTNERS  
IN GOVERNANCE, RISK  
AND COMPLIANCE**







## WHO WE ARE

---

At GRC Partners, we specialize in providing **strategic advisory services** in **corporate governance, risk management, compliance, AML, regulatory affairs, and ESG.**

Our expertise empowers businesses to **navigate complex regulatory landscapes** while optimizing their operations and mitigating risks.

We serve investment firms, funds, payment institutions, crypto-related businesses, and other financial entities across Europe and beyond, ensuring they **stay ahead of regulatory changes** and **up to date with industry best practices.**

# OUR SERVICES

---

With a proactive and strategic approach, we help businesses **anticipate regulatory changes, strengthen frameworks, and align operations with best practices**; enhancing efficiency, trust, and competitive advantage in a complex landscape.

## Regulatory Affairs & Licensing

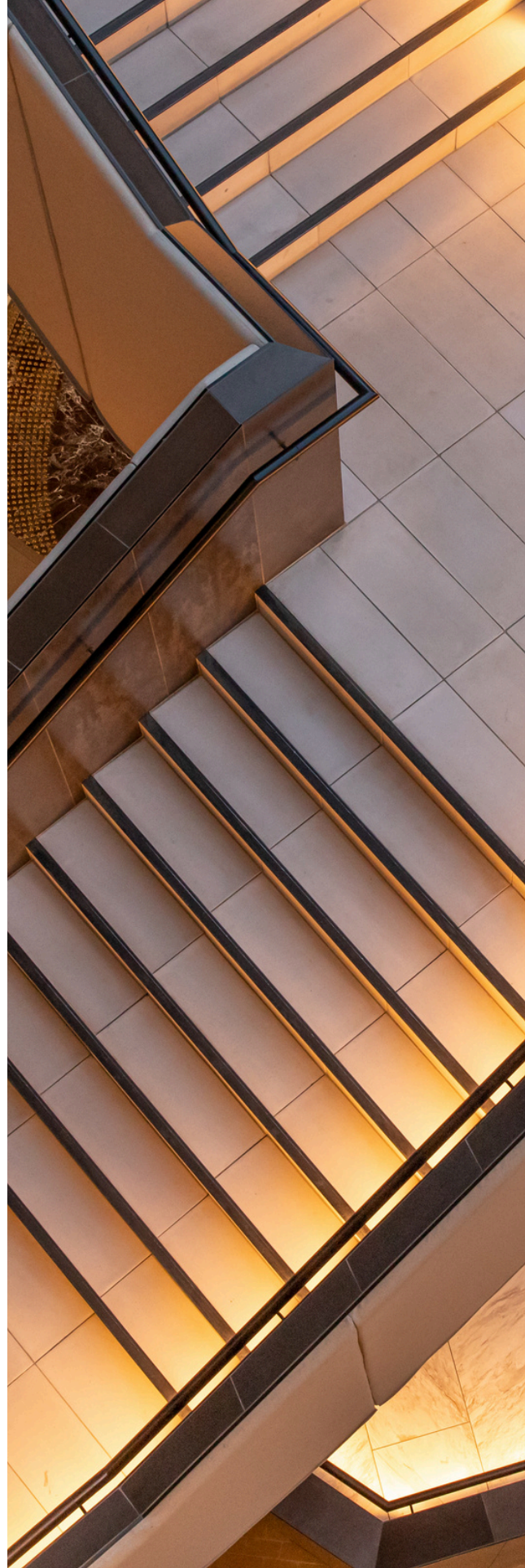
- Regulatory Submissions & Engagements
- Investment Firms
- Gaming/Online Casino
- Investment Funds
- Crypto Exchanges and Crypto Funds
- Electronic Money and Payment Institution

## Regulatory Compliance & Advisory

- Compliance as a Service (CaaS)
- Compliance Framework Development & Implementation
- Compliance Support Outsourcing
- Regulatory Risk Assessments
- Regulatory Examinations & Remediation

## Corporate Governance

- Governance Policy Development
- Board & Committee Frameworks
- Governance Audits & Risk Oversight
- Ongoing Advisory & Training





# OUR SERVICES

---

## AML & Financial Crime Prevention

- AML/CTF Risk Assessments
- AML Compliance Program Development
- KYC/CDD Frameworks
- Sanctions & Transaction Monitoring

## Risk Management

- Enterprise & Operational Risk Assessments
- Regulatory & Financial Risk Mitigation
- Strategic Risk Advisory
- Capital Adequacy

## ESG & Sustainable Finance Advisory

- Governance Policy Development
- Board & Committee Frameworks
- Governance Audits & Risk Oversight
- Ongoing Advisory & Training

## Internal Audits

- Internal Control Assessment Report
- Regulatory Compliance Review
- Risk Assessment & Mitigation Plan
- Audit Findings & Recommendations Report







# JURISDICTIONS WE COVER

We **operate across multiple financial hubs**, providing specialized regulatory expertise. Our **broad jurisdictional expertise** ensures that clients remain compliant with evolving global regulatory requirements, enabling them to **expand and operate with confidence**.



## EUROPEAN UNION



## UNITED KINGDOM



## UNITED ARAB EMIRATES

- Abu Dhabi Global Market (ADGM)
- Dubai International Financial Centre (DIFC)
- UAE Central Bank & SCA Regulations



## KEY GLOBAL MARKETS

- Bahrain
- Cayman Islands
- British Virgin Islands
- Singapore (MAS)
- Hong Kong (SFC)
- Seychelles
- Mauritius (FSC)





# TRAINING & CONTINUOUS PROFESSIONAL DEVELOPMENT

At GRC Partners, we offer **expert-led training programs** designed to **enhance your team's regulatory awareness, compliance knowledge, and risk management capabilities**. Our courses are tailored for professionals in financial services, investment firms, payment institutions, and crypto-related businesses.



## Delivery Formats:

On-site, Virtual, or Hybrid

## Certification:

Participants receive official CPD-accredited certificates

## Target Audience:

Compliance officers, board members, legal professionals, financial services executives





# WHY CHOOSE US

At GRC Partners, we go beyond compliance; we help you to **build a resilient, forward-thinking, and fully compliant business.**



## Industry Expertise

A team of seasoned professionals with deep regulatory knowledge and practical experience.



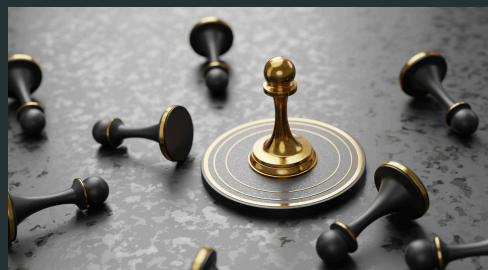
## Tailored Solutions

Bespoke advisory services designed to fit your unique business model and regulatory environment.



## Global Perspective

Experience working with regulators and financial entities across multiple jurisdictions.



## Strategic Insight

We don't just ensure compliance, we help you turn regulatory challenges into competitive advantages.



# CONNECT FOR MORE



**GRC PARTNERS**  
Regulatory Advisory



[www.grc.partners](http://www.grc.partners)



[info@grc.partners](mailto:info@grc.partners)



+357 22032823